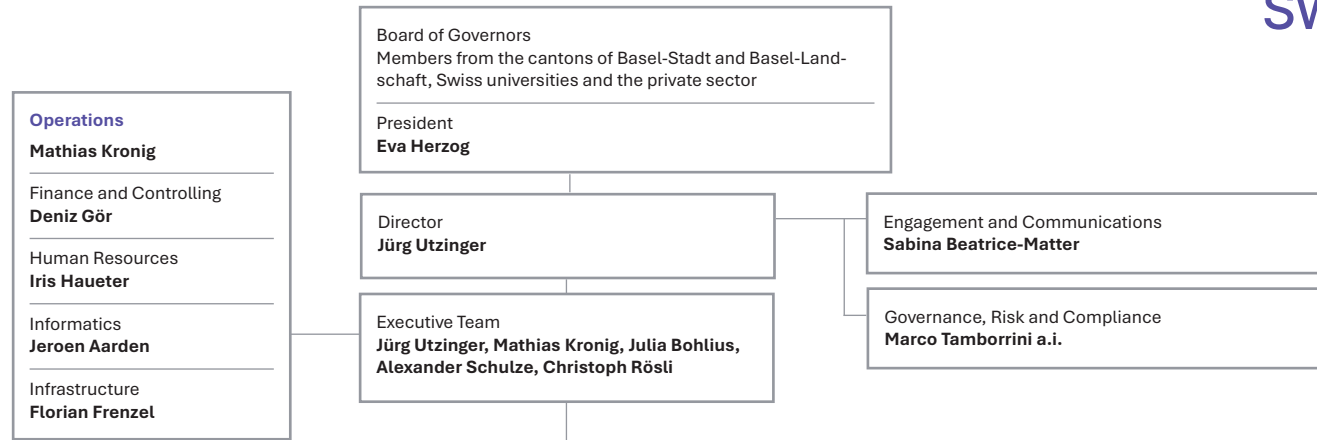


Organigram 2026



Research Jürg Utzinger a.i.		
Agricultural Health Samuel Fuhrmann	Genotyping Christian Nsanzabana	One Health East Africa Rea Tschopp
Analytics and Intervention Modelling Emilie Pothin	Health Systems and Policy Fabrizio Tediosi	Parasite Chemotherapy Pascal Mäser
Bayesian Modelling and Analysis Penelope Vounatsou	Health and Development Economics Günther Fink	Sensing and Environmental Epidemiology Marloes Eeftens
Cancer Disparities Julia Bohlius	Helminth Epidemiology and Control Peter Odermatt	Society, Gender and Health Sonja Merten
Climate, Health and Policy Martina Ragetti	Helminth Immunology Tiffany Bouchery	Systems Innovation Research Daniel Cobos Muñoz
Clinical Immunology Claudia Daubenberger	Helminth Research and Medicines Jennifer Keiser	Translational Diagnostics and Therapeutics Daniel Paris
Clinical Tuberculosis Research Klaus Reither	Household Health Systems Daniel Mäusezahl	Tuberculosis Ecology and Evolution Sébastien Gagneux
Disease Modelling Nakul Chitnis	Human and Animal Health Jakob Zinsstag	Tuberculosis Immunology Damien Portevin
Environmental Exposures and Health Martin Rössli	Malaria Gene Regulation Till Voss	Urban Public Health Mirko Winkler
Epidemiology and Intervention Sciences Manuel Hetzel	Malaria Host Interactions Nicolas Brancucci	Vector Biology Pie Müller
Epidemiology and Viral Evolution Emma Hodcroft	Molecular Immunology Gerd Pluschke	Viral Immunology Katharina Röltgen
Exposome Science Nicole Probst-Hensch	New Vector Control Interventions Sarah Moore	

Education Julia Bohlius
Bachelor, Master and Doctorate Peter Odermatt
Learning Innovation Christoph Pimmer
Library and Documentation Janina Müller
Professional Postgraduate Training Karin Gross

Implementation Alexander Schulze
Centre for Tropical and Travel Medicine Andreas Neumayr, Esther Künzli, Sandra Brandenberger
Clinical Operations Elisabeth Reus
Diagnostics Beatrice Nickel
Digital Health Mira Emmanuel-Fabula
Diseases and Programmes Peter Steinmann
Systems Performance and Monitoring Odile Pham-Tan
Systems Strengthening and Health Promotion Helen Prytherch

Platforms Christoph Rösli
Biostatistics and Data Management Christoph Rösli a.i.
Central Laboratory Anna Stürmann
Cohorts and Biobanks Medea Imboden
Projects and Grants Michael Käser
Research Informatics Aurelio Di Pasquale