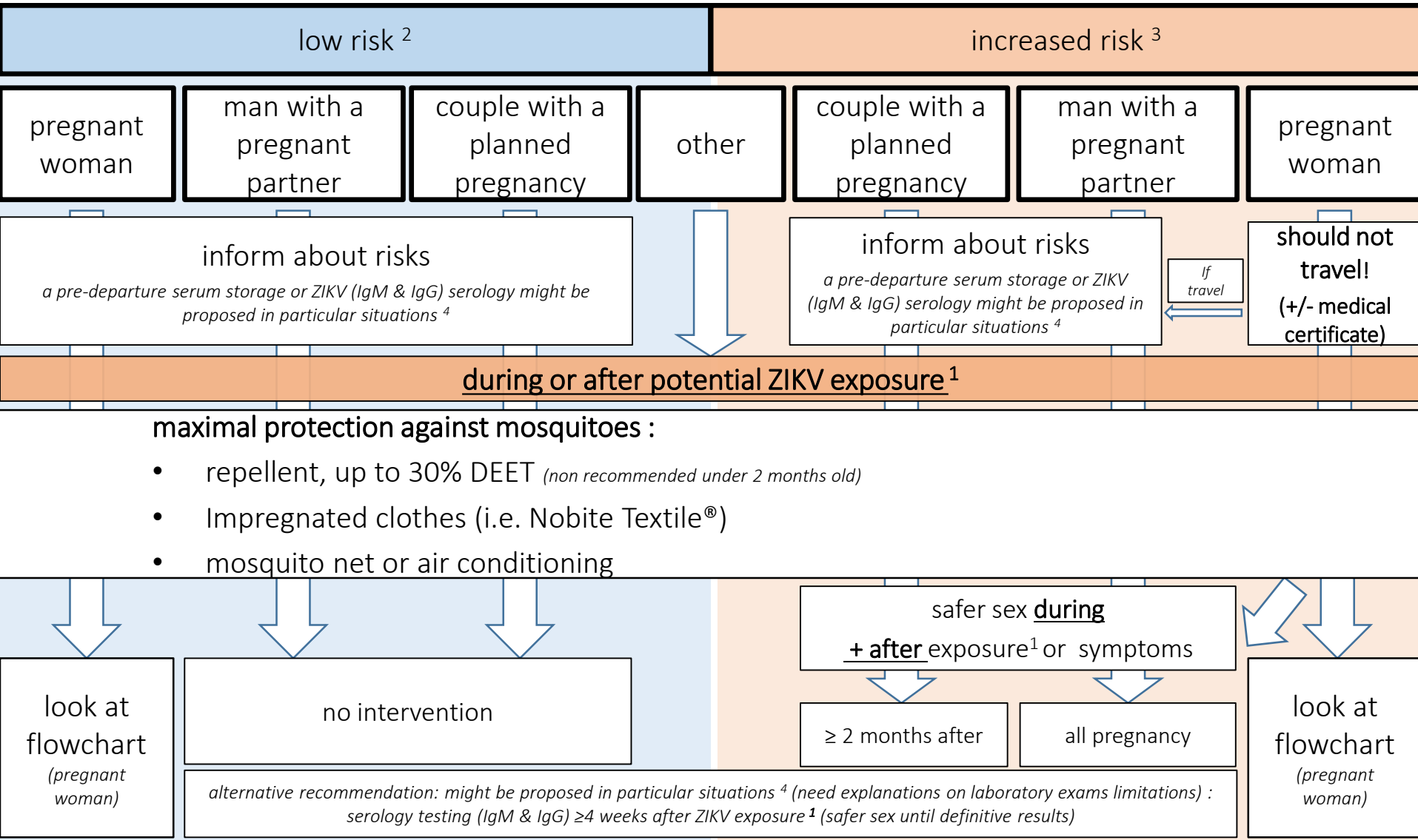


# ZIKA virus (ZIKV) : flowchart potential ZIKV exposure<sup>1</sup> and prevention



<sup>1</sup> definition of a **potential ZIKV exposure**: a) history of travel/residence in a possible ZIKV transmission area (low<sup>2</sup> or increased<sup>3</sup> area) : <https://wwwnc.cdc.gov/travel/page/zika-travel-information>

b) unprotected sexual contact with an exposed partner within 2 months after ZIKV symptoms OR his/her return from a possible ZIKV transmission area

<sup>2</sup> **low risk**= travel (including partner's) in an area with current or past reported ZIKV cases OR in an area where the vector (mosquitoes) is present

<sup>3</sup> **increased risk** = travel (including partner's) in an area with a ZIKV outbreak OR IgM ZIKV+ partner

<sup>4</sup> particular case : multiple ZIKV exposure, assisted reproduction...

# ZIKA virus (ZIKV) : flowchart

## a/symptomatic<sup>1</sup> pregnant woman after ZIKV potential exposure<sup>2</sup>

asymptomatic OR current symptoms<sup>1</sup> ≥ 4 weeks after exposure<sup>2</sup>

low risk<sup>3</sup>

increased risk<sup>4</sup>

symptomatic<sup>1</sup> (< 4 weeks after exposure<sup>2</sup>)

(irrespective of the visiting area)

history/previous yellow fever vaccine?

- PCR (plasma + urine) + ZIKV (IgM & IgG) serology and serum storage
- management for « fever after travel return »

- consider others investigations, including TORSCH serologies (*Toxoplasmosis, Rubella, Syphilis, CMV, HSV, VZV*)
- ZIKV (IgM & IgG) serology and serum storage: ≥4 weeks after symptoms/exposure  
(if < 4 weeks after last symptoms/exposure: repeat 4 weeks after 1<sup>st</sup> test)

+

supplementary morphological diagnostic ultrasound (US) at 28 WA<sup>5</sup> AND ≥ 4 weeks after exposure<sup>2</sup>

negativ / physiologic

positiv / doubtful

standard pregnancy follow-up

consider specific follow-up exams  
AND  
organize paediatric follow-up

<sup>1</sup> presence of at least one of these following symptoms: fever, conjunctivitis, arthralgia, myalgia

<sup>2</sup> definition of a **potential ZIKV exposure**: a) history of travel/residence in a possible ZIKV transmission area (low<sup>3</sup> or increased<sup>4</sup> area) : <https://wwwnc.cdc.gov/travel/page/zika-travel-information>

b) unprotected sexual contact with an exposed partner within 2 months after ZIKV symptoms OR his/her return from a possible ZIKV transmission area

<sup>3</sup> **low risk**= travel (including partner's) in an area with current or past reported ZIKV cases OR in an area where the vector (mosquitoes) is present

<sup>4</sup> **increased risk** = travel (including partner's) in an area with a ZIKV outbreak OR IgM ZIKV+ partner

<sup>5</sup> WA = weeks of amenorrhea