



**UNIVERSITÉ
DE GENÈVE**

FACULTY OF MEDICINE
Institute of Global Health



THE GLOBAL GOALS
For Sustainable Development

Institute of Global Health & Sustainable Development Goals

Nefti-Eboni Bempong, MPH

Institute of Global Health, Faculty of
Medicine, University of Geneva

Division of Environmental Health and Health Promotion

PRECISION ONE HEALTH UNIT

- Neglected Tropical Disease – Snakebite & envenoming recently added to WHO's portfolio
- Snakebites remain a major problem, as the **second neglected tropical killer**
- Over **100'000 human deaths**, and claims **400'000 victims of disability and disfigurement** globally every year
- Rural communities highly affected due to a combination of limited expertise and access to anti-venoms, high burden and diversity of venomous snakes and snakebites



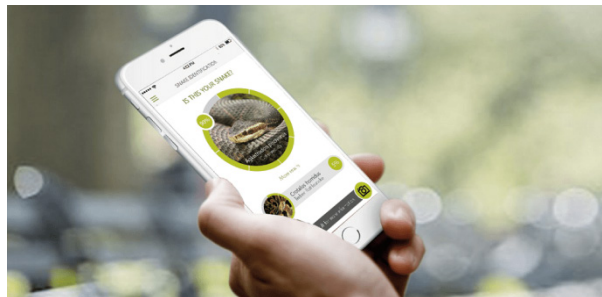
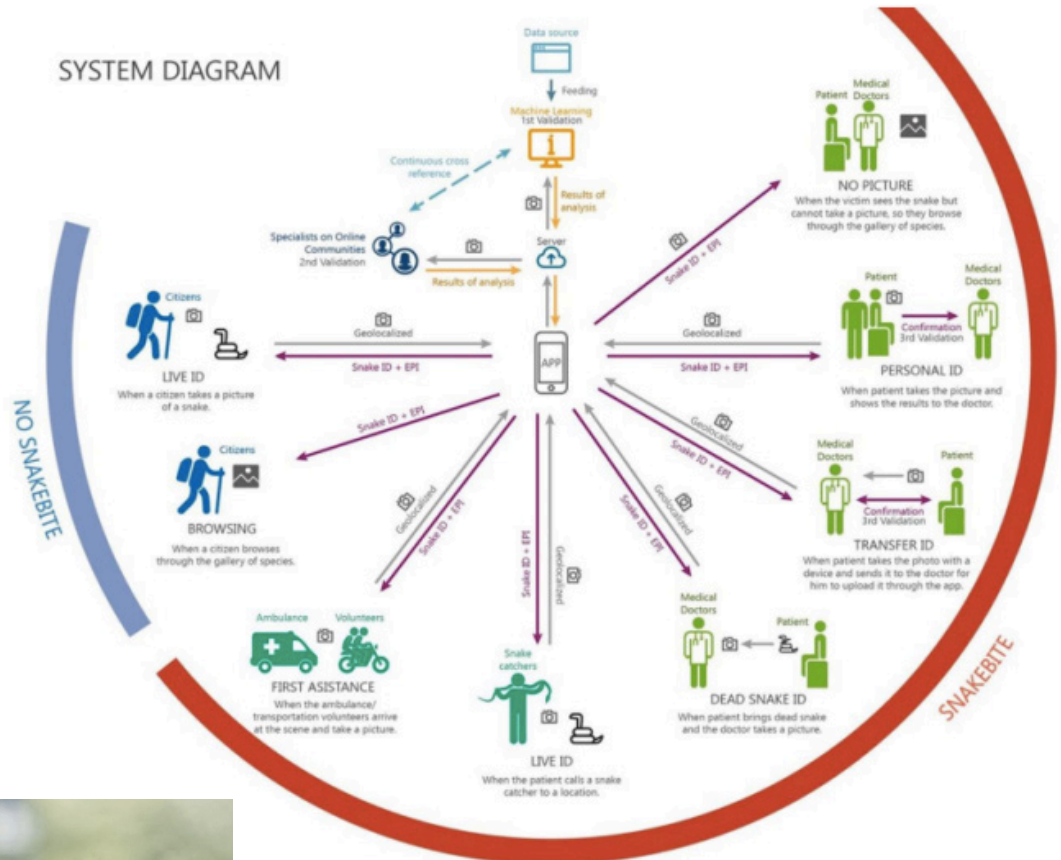
3 GOOD HEALTH
AND WELL-BEING



Division of Environmental Health and Health Promotion

PRECISION ONE HEALTH UNIT

- The first medical **decision-support mobile app** for snake identification and **artificial intelligence** and remote collaborative **expertise in herpetology**, encompassing:
 - Snake diversity & identification
 - Participatory approach



SNAPP

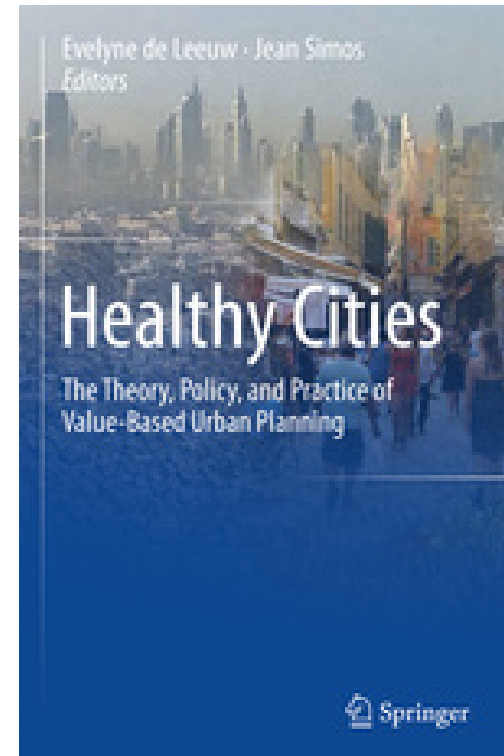
Division of Environmental Health and Health Promotion

HEALTHY CITIES

Creates and sustains health by addressing **social, economic, and political conditions**. It describes collaborations between **city planning and public health**, creating a contemporary concept of urban governance—a democratically informed process that embraces values like equity.



- Environmental impact assessment
- Strategic environmental assessment
- Sustainable assessment
- Health impact assessment



Division of Environmental Health and Health Promotion

HEALTHY CITIES

← Increasing Emphasis on Positivist Research

Generating
Scientific
Knowledge

Guiding
Decision-
Making

Informing
Decision-
Making

Increasing
Participation

Participatory
Learning

→ Increasing Recognition of the Role of Values

HEALTH IMPACT ASSESSMENT

11 SUSTAINABLE CITIES
AND COMMUNITIES





**UNIVERSITÉ
DE GENÈVE**

FACULTY OF MEDICINE
Institute of Global Health

HUG Hôpitaux
Universitaires
Genève
MÉDECINE TROPICALE ET HUMANAIRE



THANK YOU

Swiss TPH 
Swiss Tropical and Public Health Institute
Schweizerisches Tropen- und Public Health-Institut

 **University
of Basel**